

More than  
25 years' experience

# CLUB30 Hand guns for winners!

## Club 30 revolver configuration tool



### Model series 686

**Frame:** S & W L frames, round butt, stainless.

**Cylinder:** with torsion pins. **Trigger:** 1.110 g with trigger stop.

Possible coatings for operational parts, cylinder or the complete firearm: TiN (gold), TiNAl (black), CrN (mouse-grey), DLC (black), hard chrome and special coatings on request.

### Polygonal barrels · Caliber .357mag 6

HTL-Ferlach



HTL-Ferlach



Competition (fluted)



HBH – DSB



HBH – 1500



### Variable sights

LPA sight TXT with target front sight



Kühn gunsmith 3-position sight

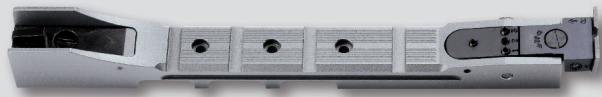


### Variable target front sight



### Revolver sight rails

Merkle tuning multi-position Picatinny rails



HBH 4-position Picatinny rails (without front sight protection)



HBH 4-position Picatinny rails (with front sight protection)



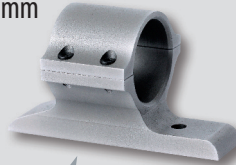
HBH exchangeable front sight



HBH rear sight (variable)



Merkle Tuning assembly  
Ø 30 mm



Picatinny over-all rails  
for barrel fitting



### Tuning lock parts

Merkle tuning cylinder slider



Merkle Tuning firing pin,  
oversized



### Grip panels with finger grooves

brown

black



Prommersberger trigger  
and hammer (made from  
high quality tool steel)



More information can be found at [www.club30.de](http://www.club30.de)

